

APPENDIX

SOME PRINCIPAL TABLES

TABLE I
AREA AND POPULATION BY TALUKS

Sl. No.	Taluk	Area				Population 1961		
		Commissioner for Land Records, Survey and Settlement		Survey of India		Rural	Urban	Total
		sq. miles	sq. km.	sq. miles	sq. km.			
1.	Afzalpur	513.9	1,331.0	505.33	1,308.80	90,071	..	90,071
2.	Aland	678.4	1,757.1	673.47	1,744.27	1,42,326	18,009	1,60,335
3.	Chincholi	608.6	1,576.2	536.76	1,390.20	1,01,716	6,047	1,07,763
4.	Chittapur	691.2	1,790.2	689.38	1,785.48	1,42,948	31,828	1,74,776
5.	Gulbarga	663.7	1,719.0	730.23	1,891.28	1,31,704	97,069	2,28,773
6.	Jevargi	746.2	1,932.6	711.81	1,843.58	1,11,212	..	1,11,212
7.	Seram	365.4	946.4	384.37	995.51	82,162	8,527	90,689
8.	Shahapur	627.2	1,624.5	655.45	1,697.60	1,26,325	11,776	1,38,101
9.	Shoranur	711.0	1,841.5	714.89	1,851.55	1,19,895	17,689	1,37,584
10.	Yadgir	665.6	1,723.9	663.87	1,719.41	1,24,677	35,476	1,60,153
	Total	6,271.2	16,242.4	6,265.56	16,227.68	1,173,036	2,26,421	13,99,457

TABLE 2
AREA AND POPULATION BY TOWNS

Sl. No.	Town	Area in		Population per sq. mile	Number of occupied residential houses	Population 1961		
		sq. miles	sq. km.			Persons	Males	Females
1.	Gulbarga	9.00	23.31	10,785	16,847	97,069	51,019	46,050
2.	Aland	2.50	6.48	7,204	3,080	18,009	9,065	8,944
3.	Chincholi	0.10	0.26	60,470	1,184	6,047	3,071	2,976
4.	Chittapur	1.30	3.37	8,749	2,276	11,374	5,802	5,572
5.	Shahabad	2.90	7.51	7,053	4,271	20,454	10,302	10,152
6.	Seram	1.70	4.40	5,016	1,621	8,527	4,345	4,182
7.	Shahapur	0.30	0.78	39,253	2,077	11,776	5,823	5,953
8.	Shorapur	3.00	7.77	5,896	2,863	17,689	8,686	9,003
9.	Yadgir	2.00	5.18	12,882	4,872	25,764	12,865	12,899
10.	Gurmatkal	0.20	0.52	48,560	1,688	9,712	4,811	4,901
	Total	23.00	59.58	9,844	40,779	226,421	115,789	110,632

TABLE 3

Occupational classification of persons at work (other than cultivation) in Gulbarga District in 1961.

<i>Sl. No.</i>	<i>Occupations</i>	<i>Males</i>	<i>Females</i>	<i>Total</i>
1	2	3	4	5
1.	Engineers, Architects and Surveyors	148	..	148
2.	Physicians, Surgeons and Dentists	323	16	339
3.	Nurses, Pharmacists and other Medical and Health Technicians	465	117	582
4.	Teachers	3,111	372	3,483
5.	Jurists	213	..	213
6.	Labour and Social Welfare Workers	107	9	116
7.	Writers, Artists and related workers	276	7	283
8.	Administrators and Executive Officials (Government)	1,162	30	1,192
9.	Clerical workers, Stenographers, Typists, Book-keepers and Cashiers	3,820	85	3,905
10.	Unskilled Office Workers (including Attendants, etc.)	2,647	76	2,723
11.	Working Proprietors—Wholesale and Retail Trade	13,507	2,955	16,462
12.	Working Proprietors, Directors and Managers (construction, manufacturing, recreation, entertainment, catering services, etc.)	1,793	108	1,901
13.	Salesmen, Shop Assistants and related workers	3,073	423	3,496
14.	Farm Workers (Animals, Birds and Insects-rearing), Gardeners, Tappers, etc.	18,923	1,642	20,565
15.	Electricians and related workers	151	..	151
16.	Miners, Quarrymen and related workers	693	932	1,625

1	2	3	4	5
17.	Workers in Transport and Communications (including railway and road transport, Post and Telegraphs, etc.,)	3,279	69	3,348
18.	Spinners, Weavers, Dyers and related workers	10,526	11 951	22,477
19.	Tailors, Cutters and related workers	3,092	873	3,965
20.	Shoe-makers, Shoos-repairers and related workers	1,579	165	1,744
21.	Blacksmiths and related workers	1,585	118	1,703
22.	Jewellers, Goldsmiths and related workers	1,398	89	1,487
23.	Tool-makers, Welders, Machinists and related workers	1,051	27	1,078
24.	Carpenters, Cabinet-makers and related workers	3,807	49	3,856
25.	Brick-layers, Plasterers, Stone-cutters and other construction workers	5,165	1,533	6,698
26.	Potters, Kilnmen, Ceramic workers, etc.	2,459	618	3,077
27.	Millers, Bakers, Oilseed-pressers, Pounders and related food and beverage workers.	2,153	237	2,390
28.	Tobacco-preparers and Products-makers	1,336	2,079	3,415
29.	Craftsmen and Production Process Workers (basket-weavers, tanners, packers, etc.,)	2,650	2,326	4,976
30.	Policemen, Guards, Watchmen and related workers	1,686	1	1,687
31.	House-keepers, Cooks, Maids, Waiters and related workers	2,189	621	2,810
32.	Sweepers, Cleaners and Watermen	805	405	1,210
33.	Barbers, Hair-dressers and related workers	1,899	..	1,899
34.	Washerwomen, Laundrymen, Dhobies, etc.	981	1,276	2,257
35.	Labourers not elsewhere classified	29,142	26,210	55,352
36.	Workers not classifiable by occupation	666	197	863

Source : Census of India 1961, Vol. XI, Mysore, Part II-B(ii)—General Economic Tables.

TABLE 4
LIVESTOCK POPULATION IN GULBARGA DISTRICT

A. Cattle and Buffaloes as per Livestock Census, 1961.

Sl. No.	Taluk	Cattle			Buffaloes		
		Male	Female	Total	Male	Female	Total
1.	Gulbarga	45,716	36,117	81,833	4,189	16,494	20,683
2.	Chittapur..	46,909	35,648	82,557	4,091	14,636	18,727
3.	Shahapur	33,579	30,198	63,777	4,061	13,644	17,705
4.	Shorapur	38,821	30,617	69,438	3,744	16,746	20,490
5.	Yadgir ..	40,633	28,961	69,594	5,919	12,453	18,372
6.	Aland ..	44,524	31,655	76,179	4,977	17,521	22,498
7.	Chincholi	40,631	31,766	72,397	3,506	11,150	14,656
8.	Seram ..	30,162	22,215	52,377	2,680	8,000	10,680
9.	Afzalpur ..	26,090	15,510	41,600	2,644	8,310	10,954
10.	Jevargi ..	29,952	19,168	49,120	2,713	8,204	10,91
	Total ..	3,77,017	2,81,855	6,58,872	38,524	1,27,158	1,65,682

B. Number of other Livestock as per the Livestock Census of 1961.

Sl. No.	Taluk	Sheep	Goats	Horses and Ponies	Mules	Donkeys	Crimels	Pigs
1.	Gulbarga	29,260	22,121	789	14	552	..	986
2.	Chittapur	19,535	24,934	1,297	11	426	24	579
3.	Shahapur	34,192	29,018	1,477	32	581	..	477
4.	Shorapur	37,768	36,724	782	12	388	15	420
5.	Yadgir	60,080	24,398	530	53	813	7	603
6.	Aland	23,262	13,753	893	23	282	9	1,215
7.	Chincholi	16,922	19,361	829	9	456	..	596
8.	Seram	16,375	14,334	632	..	667	..	10
9.	Afzalpur	19,692	15,272	298	..	86	..	752
10.	Jevargi ..	22,195	16,753	2,089	27	251	13	1,263
	Total ..	2,79,281	2,16,668	9,616	181	4,502	68	6,901

TABLE 4 (Contd.)
C. Number of Poultry as per the Livestock Census, 1961

Sl. No.	Taluk	Fowls				Ducks				Others	Total Poultry
		Hens	Cocks	Chicken	Total	Ducks	Drakes	Ducklings	Total		
1.	Gulbarga	18,406	4,927	19,194	42,527	79	85	43	207	11	42,745
2.	Chittapur	17,117	5,679	18,978	41,774	31	46	19	96	73	41,943
3.	Shahapur	15,385	5,189	19,240	39,814	6	6	..	12	..	39,826
4.	Shorapur	16,540	5,232	20,382	42,154	33	105	5	143	24	42,321
5.	Yadgir	17,436	5,317	20,859	43,612	10	24	5	39	14	43,665
6.	Aland	7,810	1,958	9,304	19,072	20	28	37	85	..	19,157
7.	Chinchoi	13,699	5,419	17,817	36,935	12	3	2	17	66	37,018
8.	Seram	1,589	1,057	1,654	4,300	4,300
9.	Afzalpur	9,946	2,565	10,975	23,486	..	2	..	2	11	23,499
10.	Jevargi	12,979	4,749	13,280	31,008	35	60	29	124	87	31,219
	Total	1,30,907	42,092	1,51,683	3,24,682	226	359	140	725	286	3,25,693

Metric Weights and Measures

Length—

- 10 millimetres = 1 centimetre
 100 centimetres = 1 metre.
 1,000 metres = 1 kilometre.
 1,852 metres = 1 nautical mile (international).

Area—

- 100 square millimetres = 1 square centimetre.
 10,000 square centimetres = 1 square metre or centiare.
 100 square metres = 1 are.
 100 ares = 1 hectare.
 100 hectares or 1,000,000 square metres = 1 square kilometre.

Volume—

- 1,000,000 cubic centimetres = 1 cubic metre.

Capacity—

- 1,000 millilitres = 1 litre.
 1,000 litres = 1 kilolitre.

Weights—

- 1,000 milligrams = 1 gram.
 1,000 grams = 1 kilogram.
 100 kilograms = 1 quintal.
 1,000 kilograms = 1 tonne.
 200 milligrams = 1 carat.

Conversion Factors

Length—

- 1 inch = 2.54 centimetres
 1 foot = 30.48 centimetres
 1 yard = 91.44 centimetres
 1 mile = 1.61 kilometres
 1 nautical mile (UK) = 1853.18 metres

- 1 nautical mile (international) = 1852 metres

Volume—

- 1 cubic foot = 0.028 cubic metre

Area—

- 1 square foot = 0.093 square metre.
 1 square yard = 0.836 square metre.
 1 square mile = 2.59 square kilometres.
 1 acre = 0.405 hectare

Capacity—

- 1 gallon (Imperial) = 4.55 litres
 1 seer (80 tolas) = 0.937 litre
 1 Madras measure = 1.77 litres

Temperature—

- T° Fahrenheit = $\frac{9}{5}$ (T° centigrade) + 32

Monetary Conversion Table

<i>Annas</i>	<i>Pies</i>	<i>Paise</i>	<i>Annas</i>	<i>Pies</i>	<i>Paise</i>
0	3	2	8	3	52
0	6	3	8	6	53
0	9	5	8	9	55
1	0	6	9	0	56
1	3	8	9	3	58
1	6	9	9	6	59
1	9	11	9	9	61
2	0	12	10	0	6
2	3	14	10	3	64
2	6	16	10	6	66
2	9	17	10	9	67
3	0	19	11	0	69
3	3	20	11	3	70
3	6	22	11	6	72
3	9	23	11	9	73
4	0	25	12	0	75
4	3	27	12	3	77
4	6	28	12	6	78
4	9	30	12	9	80
5	0	31	13	0	81
5	3	33	13	3	83
5	6	34	13	6	84
5	9	36	13	9	86
6	0	37	14	0	87
6	3	39	14	3	89
6	6	41	14	6	91
6	9	42	14	9	92
7	0	44	15	0	94
7	3	45	15	3	95
7	6	47	15	6	97
7	9	48	15	9	98
8	0	50	16	0	100

Re. 1=Annas 16=Paise 100. Pies 12=Anna 1.= Paise 6.

**Metric Weights and their nearest equivalents in F.P.S.
System and in the District of Gulbarga**

Sl. No.	Weights in Metric System (1 kg. = 1,000 gms.)		Equivalents in F.P.S. System		Equivalents in the District of Gulbarga		
	kg	g.	Lbs.	Oz.	Mds.	Srs.	Tolas
1	50	..	110	3 5/8	1	13	44
2	20	..	44	1 1/2	6	21	32
3	10	..	22	3/4	0	10	56
4	5	..	11	3/8	0	5	28
5	2	..	4	6 1/4	0	2	9 3/5
6	1	..	2	3 1/2	0	1	4 4/5
7		500	1	1 3/5	0	0	43
8		200	0	7	0	0	17
9		100	0	3 1/2	0	0	8 1/2
10		50	0	1 3/4	0	0	4 1/3
11		20	0	7/10	0	0	1 3/4
12		10	0	7/20	0	0	17/20
13		5	0	7/40	0	0	17/40
14		2	0	7/100	0	0	17/100
15		1	0	7/200	0	0	17/200

Measures which were in use in Gulbarga District and their equivalents

	Seer	Pav	Chatak	Seer	Millilitre	
2 litres	..	2	..	2	1	934
1 litre	..	1	..	1	1/2	467
500 ml	2	1/2	1/4	233
200 ml	3	2/5	1/8	117
100 ml	1	7/10	1/16	58
50 ml	17/20	1/32	29
20 ml	17/50		

Denominations of litre measure in use

20 litres	1 litre	50 ml
10 litres	500 ml	20 ml
5 litres	200 ml	
2 litres	100 ml	

Cylindrical type Aluminium, Brass and Stainless Steel pouring and dipping
measures for liquids only.

G. I. Conical measures for kerosene and motor oils only.

1 Gallon = 4.55 litres

1 litre = 1,000 millilitres

Weights in existence in Gulbarga District prior to the introduction of Metric Weights, and their equivalents.					
Chataks (1 chatak=5 tolas)		Grams (to the nearest gram)	Chataks (1 chatak=5 tolas)		Grams (to the nearest gram)
1		58	9		525
2		117	10		583
3		175	11		642
4		233	12		700
5		292	13		758
6		350	14		816
7		408	15		875
8		467			

Seers (1sr. = 80 tolas).	Kilograms	Grams (to the nearest 10 grams)	Seers (1 sr. = 80 tolas)	Kilograms	Grams (to the nearest 10 grams)
1	2	3	1	2	3
1	..	930	21	19	600
2	1	870	22	20	530
3	2	800	23	21	460
4	3	730	24	22	390
5	4	670	25	23	330
6	5	600	26	24	260
7	6	530	27	25	190
8	7	460	28	26	130
9	8	400	29	27	60
10	9	330	30	27	990
11	10	260	31	28	930
12	11	200	32	29	860
13	12	130	33	30	790
14	13	60	34	31	730
15	14	..	35	32	660
16	14	930	36	33	590
17	15	860	37	34	520
18	16	800	38	35	460
19	17	730	39	36	390
20	18	660			

Maunds (1 maund=40 seers)	Kilograms (to the nearest kilogram)	Maunds (1 maund=40 seers)	Kilograms (to the nearest kilogram)
1	2	1	2
1	37	11	411
2	75	12	448
3	112	13	485
4	149	14	523
5	187	15	560
6	224	16	597
7	261	17	635
8	299	18	672
9	336	19	709
10	373	20	746

Source : Office of the Controller of Weights and Measures, Bangalore

SELECT BIBLIOGRAPHY

- Dave, J. H.** Immortal India, Volume IV, Bharatiya Vidya Bhavan, Bombay, 1961.
- Dutta, K. R.** Rise of Prices in India, 1914
- Gopala Rao, H. G.** . . Soil and Soil Fertility in Mysore State
- Halappa, G. S.** History of Freedom Movement in Karnataka, Vol. II, Mysore Government Publication, Bangalore.
- Hussain Mazhar** Retail and Wholesale Prices in Hyderabad State, Government Central Press, Hyderabad-Deccan, 1942.
- Krishnarao, M. V.** History of Freedom Movement in Karnataka, Vol. I, Mysore Government Publication, Bangalore.
and
Halappa, G. S.
- Majumdar, R. C.** History and Culture of the Indian People, Volumes I to VI, Bharatiya Vidya Bhavan, Bombay.
- Majumdar, R. C.,** Modern India—Being Part III of an Advanced History of India, Macmillan & Co.,
Ray Chaudhuri, H. C. Ltd., London, 1956.
and **Kalikinkar Datta**
- Nanjunda** Paradara Sodara Ramana Charite.
- Nilakanta Sastri, K. A.** . A History of South India from Pre-historic times to the fall of Vijayanagar, Oxford University Press, 1955.
- Qureshi, A. I.** Economic Development of Hyderabad, Vol. I, Rural Economy, 1947.
- Sherwani, Haroon** The Bahmanis of the Deccan, Saood Manzil,
Khan Himayatnagar, Hyderabad-Deccan, 1953.
- Yazdani, G.** An Early History of the Deccan, Volumes I and II, Oxford University Press, 1960.

.....

Agrarian Reforms Committee Report, 1950, Hyderabad.

Census of Government Employees, 1960, 1962 and 1963, Department of Statistics, Government of Mysore, Bangalore.

Census of India, 1931, Vol. XXV, Mysore, Part I, Report, 1932

Census of India, 1961, Vol. XI, Mysore, Part II-A, General Population Tables, 1964.

Census of India, 1961, Vol. XI, Mysore, Part II-B (ii)—General Economic Tables.

Census of India, Hyderabad State, 1941

Census of Land-holdings in Hyderabad State, Vol. II, Hyderabad, 1956.

Five-Year Plans of Mysore State, I, II and III.

Gulbarga District Census Hand-book, 1951.

Hand-book on Industries, Gulbarga District, 1962, Govt. of Mysore.

Hyderabad, 1952—1956, Government of Hyderabad.

Hyderabad District Gazetteers—Part II, 1925

Imperial Gazetteer of India, Vol. XII, 1908

Improved Practices in Agriculture in North Mysore.

Industries in Hyderabad—A survey published by the All-India Industrial Exhibition Society, Hyderabad.

Note on the Geology of Gulbarga District, Director of Mines and Geology, Bangalore.

Report of the Economic Committee, 1950, Government of Hyderabad

Report of the Fact-Finding Committee (States' Reorganisation), 1954, Government of Mysore.

Report of the Hyderabad Land Commission, 1954

Report of the Mysore Tenancy Agricultural Land-Laws Committee, 1958.

Report on Economic Survey of Gulbarga District by the Small Industries Service Institute.

Report on the Salt Industry of Raichur and Gulbarga Districts, Government of Hyderabad, 1934.

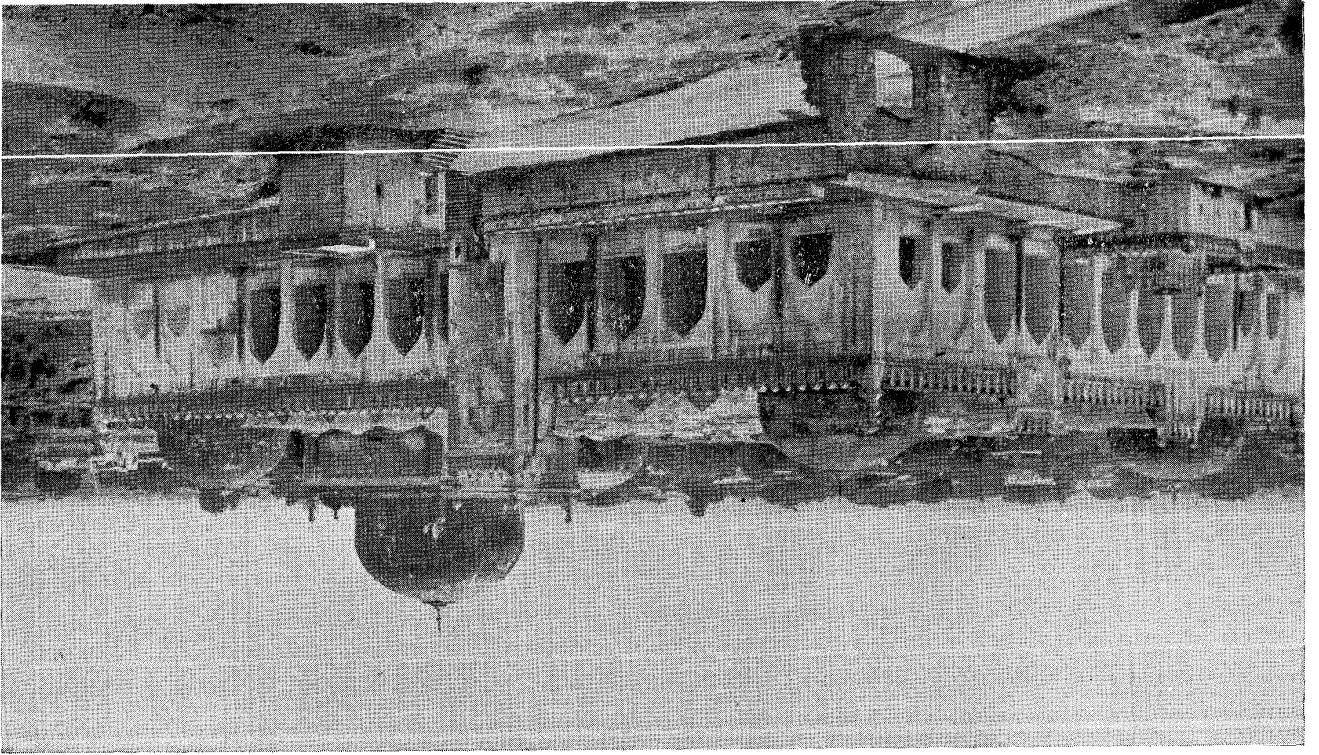
Statistical Abstracts of Hyderabad State, 1912-1921, 1953-1955.

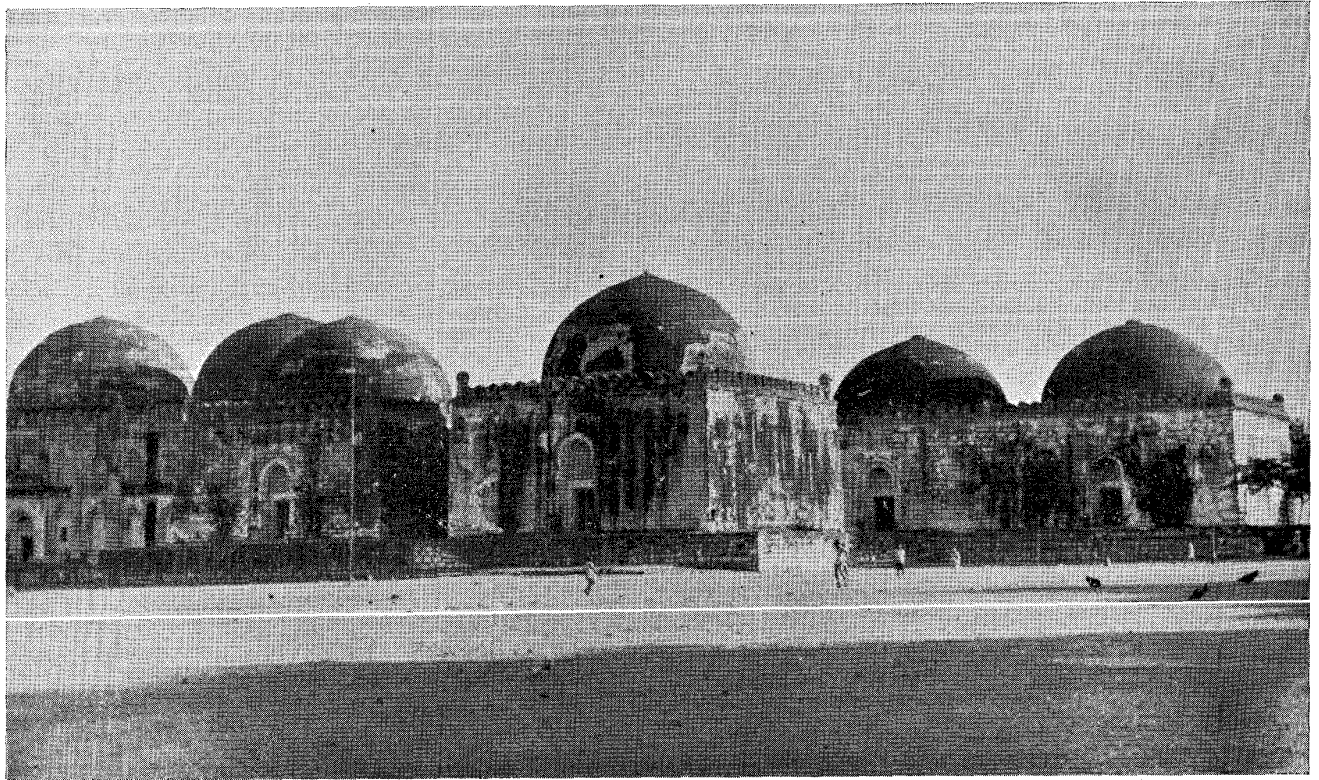
Statistical Outlines of Mysore, 1959 to 1962

Statistical Year Books of Hyderabad, 1938, 1941 and 1941-42 to 1944-45, Hyderabad.

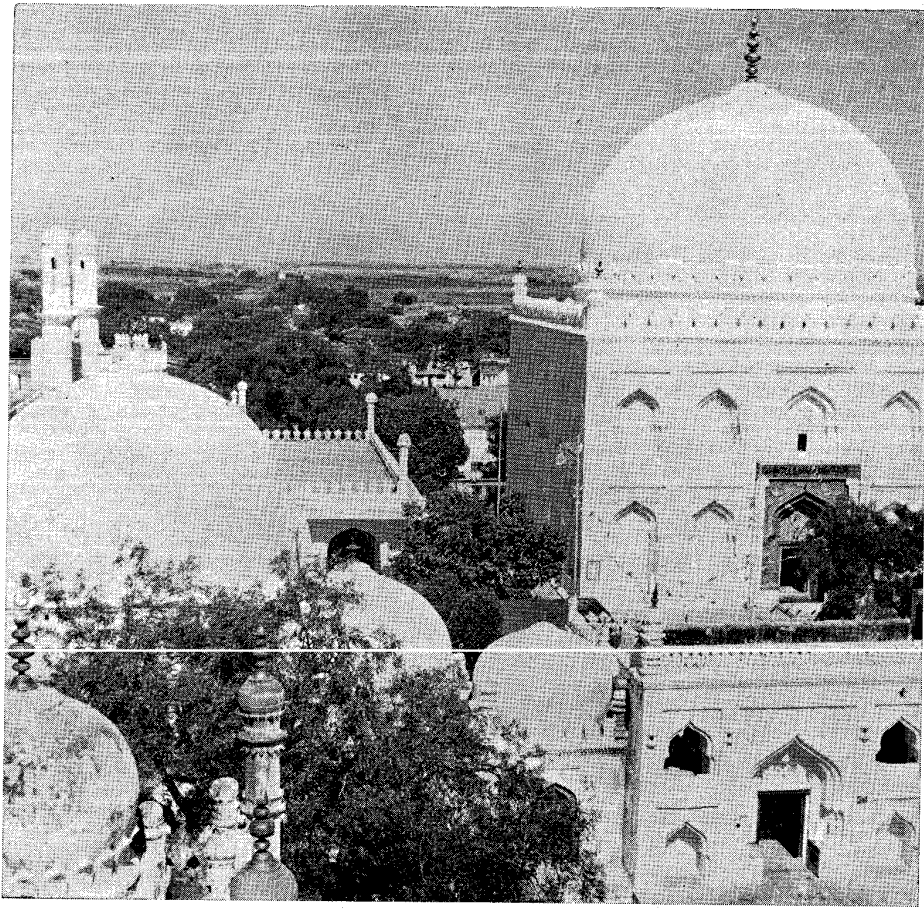
Wholesale and Retail Prices in Hyderabad State, 1889-90 to 1918-19, Hyderabad, 1922.

Jami Mosque in the Fort at Gulbarga (See pages 61, 462 and 463)

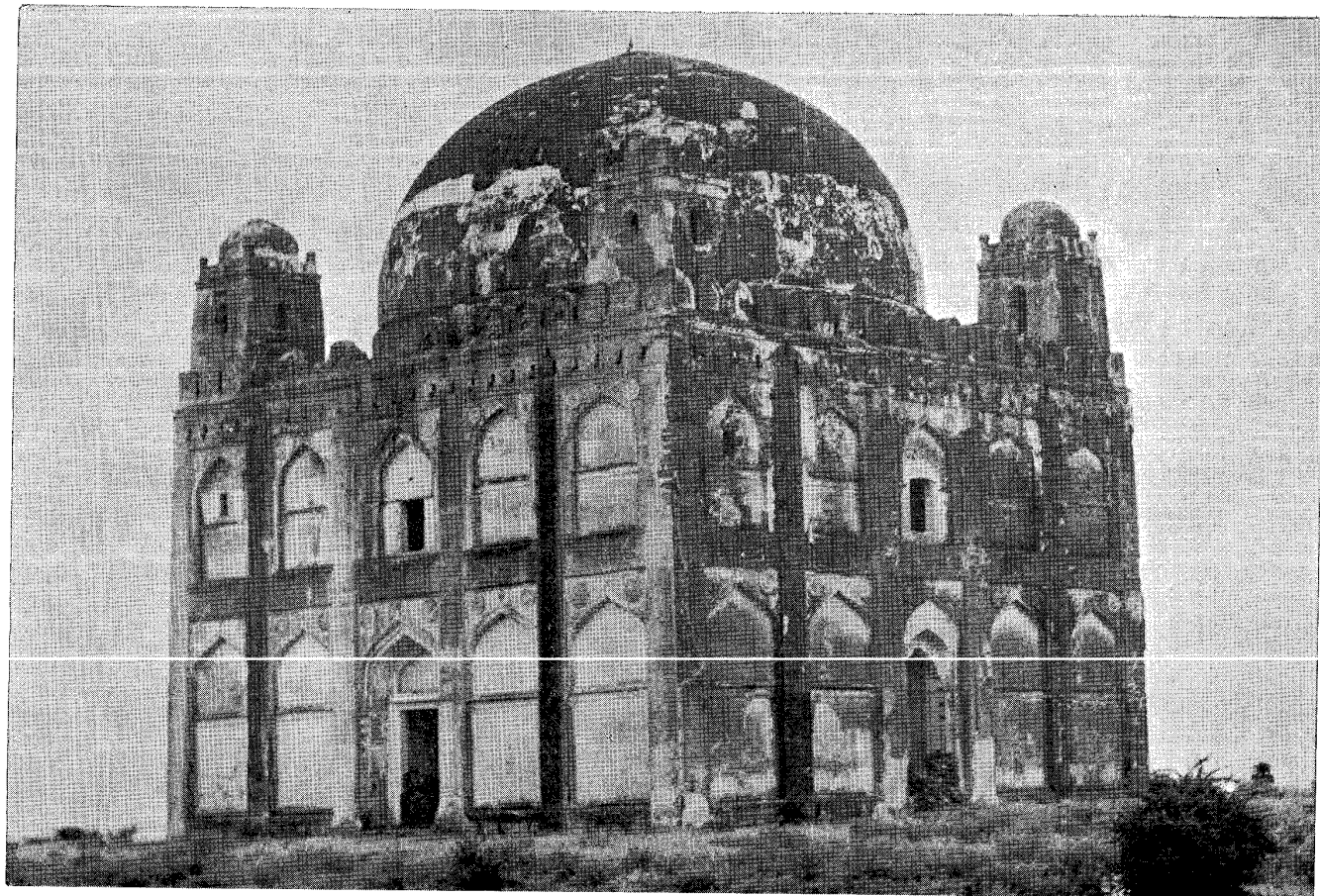




A series of Mausoleums of Bahmani Sultans at Gulbarga. These are collectively known as the Seven Domes.



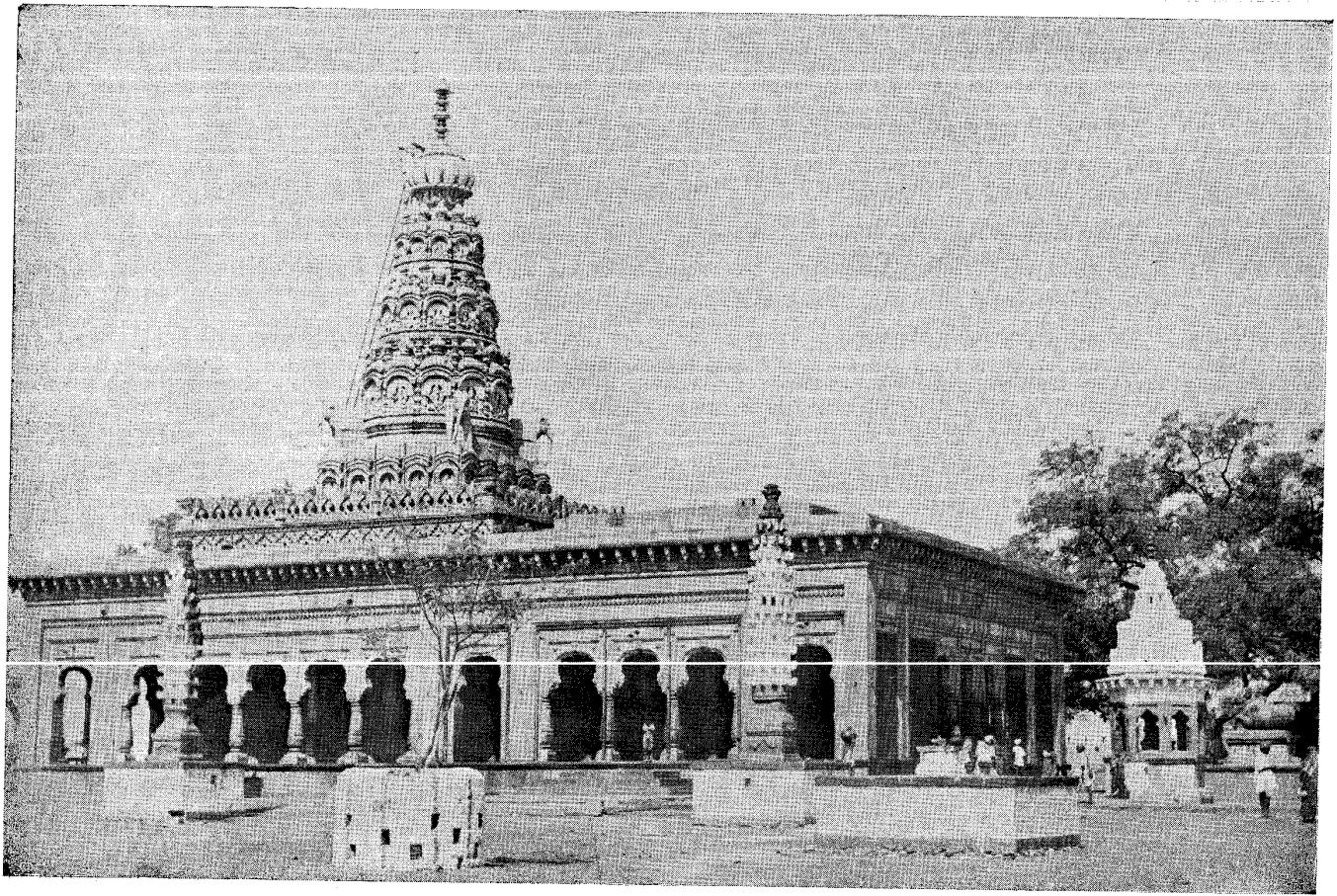
Khwaja Bande Nawaz Dargah, Gulbarga (See page 462).



A notable Bahmani Tomb at Gulbarga, popularly called as the
"Chor Gumbaz".



Aiwan-e-Shahi Guest House, Gulbarga (See pages 218 and 464)



Shri Sharanabasaveshwara Temple, Gulbarga (*See page 463*)